



# BLAST LIGHT

**BETTER VISIBILITY.  
BETTER BLASTING.**



This premium light is Available with a 20W or 35W halogen bulb and features a very tough cast aluminum housing. The Blast Light operates on low voltage (12VDC) and is available with a 120VAC converter for use with standard wall outlet voltage.

### 12V Blast Light Assys

LITE100	Blast Light Complete, 12V, Halogen, <b>20W</b> , 10' Cord
LITE200	Blast Light Complete, 12V, Halogen, <b>35W</b> , 10' Cord



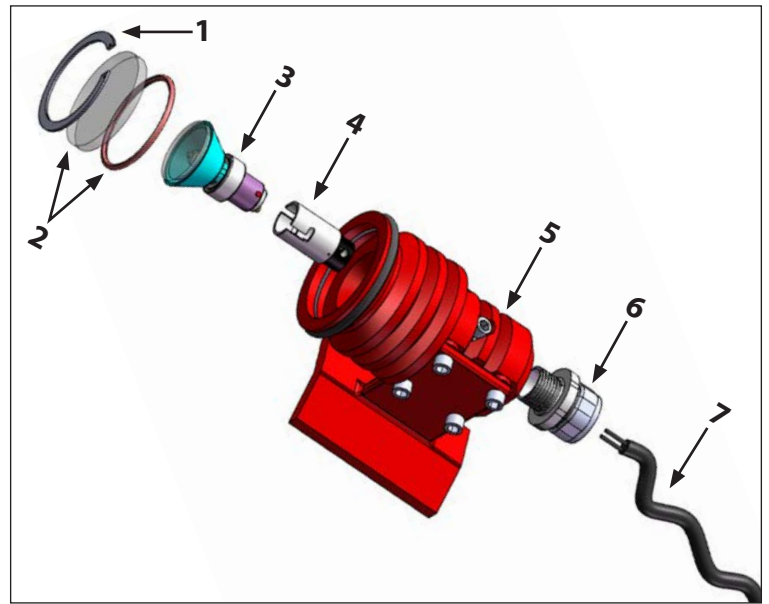
### 120V Blast Light Assys

LITE100-075	Blast Light Complete w/ 120VAC to 12 VDC Converter, Halogen, <b>20W</b> , <b>75' Cord</b>
LITE100-125	Blast Light Complete w/ 120VAC to 12 VDC Converter, Halogen, <b>20W</b> , <b>125' Cord</b>
LITE100-150	Blast Light Complete w/ 120VAC to 12 VDC Converter, Halogen, <b>20W</b> , <b>150' Cord</b>
LITE200-075	Blast Light Complete w/ 120VAC to 12 VDC Converter, Halogen, <b>35W</b> , <b>75' Cord</b>
LITE200-125	Blast Light Complete w/ 120VAC to 12 VDC Converter, Halogen, <b>35W</b> , <b>125' Cord</b>
LITE200-150	Blast Light Complete w/ 120VAC to 12 VDC Converter, Halogen, <b>35W</b> , <b>150' Cord</b>



## Replacement Parts

	<b>LITE101</b> BLAST LIGHT, OUTER LENS RETAINING CLIP
	<b>LITE102</b> BLAST LIGHT, PYREX LENS, INCLUDES O-RING
	<b>LITE286</b> BLAST LIGHT, 20 WATT REPLACEMENT BULB
	<b>LITE284</b> BLAST LIGHT, 35 WATT REPLACEMENT BULB
	<b>LITE105</b> BLAST LIGHT, LAMP SOCKET
	<b>LITE106</b> BLAST LIGHT, BODY ONLY, INCLUDES HOSE MOUNT BRACKET AND BUMP RING
	<b>888-7117-504PB</b> STRAIN RELIEF FITTING
	<b>10-203</b> CONTROL CORD, 16.2, 2 WIRE



## Commonly Purchased with Items

	<b>888-7110-024PB</b> ALLIGATOR CLIP (2 REQUIRED)
	<b>888-7111-261PB</b> INSULATOR, RED
	<b>888-7111-262PB</b> INSULATOR, BLACK
	<b>PB-31131</b> 1/2" 3 PART SEALED CONTROL CORD CONNECTOR

Distributed By:



2717 Tobey • Indianapolis, IN 46219  
(317) 545-0665 • FAX (317) 545-0670 • (800) 800-0665  
www.idsblast.com